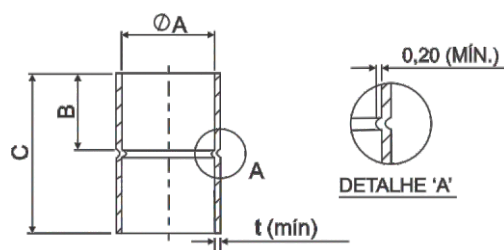




Luva de Redução (CxC) "Parede Grossa"



Luva (CxC) - "Parede grossa"

CÓDIGO FORMING	DESCRIÇÃO	A Ø int. mm	B mm	C mm	t(min.) mm	PMT Kgf/cm ²	QTD STD
LPE014159	Luva 1/4" x 1,59mm	6,55	7	18	0,48	244	100
LPE038159	Luva 3/8" x 1,59mm	9,70	8	20	0,58	177	50
LPE012159	Luva 1/2" x 1,59mm	12,90	10	24	0,66	139	50
LPE058159	Luva 5/8" x 1,59mm	16,05	13	28	0,74	114	50
LPE034159	Luva 3/4" x 1,59mm	19,25	16	34	0,79	97	50
LPE078159	Luva 7/8" x 1,59mm	22,40	20	43	0,84	84	50
LPE100159	Luva 1" x 1,59mm	25,60	21	45	-	74	10
LPE118159	Luva 1.1/8" x 1,59mm	28,80	24	51	1,02	66	10
LPE114159	Luva 1.1/4" x 1,59mm	31,95	24	51	-	60	10
LPE138159	Luva 1.3/8" x 1,59mm	35,10	25	53	1,12	55	10